

ABDOMINAL DIFFUSION MAGNETIC RESONANCE IMAGING

- Diffusion MRI is a medical imaging technique that uses strong magnetic fields to measure displacements of water molecules inside different organs and internal structures of the body.
- Diffusion MRI is a recent technique for body applications, although is widespread in clinical practice for tractography and brain diffusion (DTI).
- Diffusion weighted imaging (DWI) has multiple applications in oncological studies for several organs, but it is of special relevance in the liver [1].
- Echo-Planar Imaging (EPI) has been widely used in abdominal diffusion acquisition either with single or multi-shot radiofrequency pulses.
- DWI requires the acquisition of different b-values over the same anatomical region. The signal will suffer an exponential decay proportional to the quantity of diffusion in the excited zone.
- Apparent Diffusion Coefficient (ADC) is a well-known diffusion parameter, usually measured with b-values lower than 800 s/mm², so that the inherent SNR is favorable. However, for more complex models higher b-values are required.

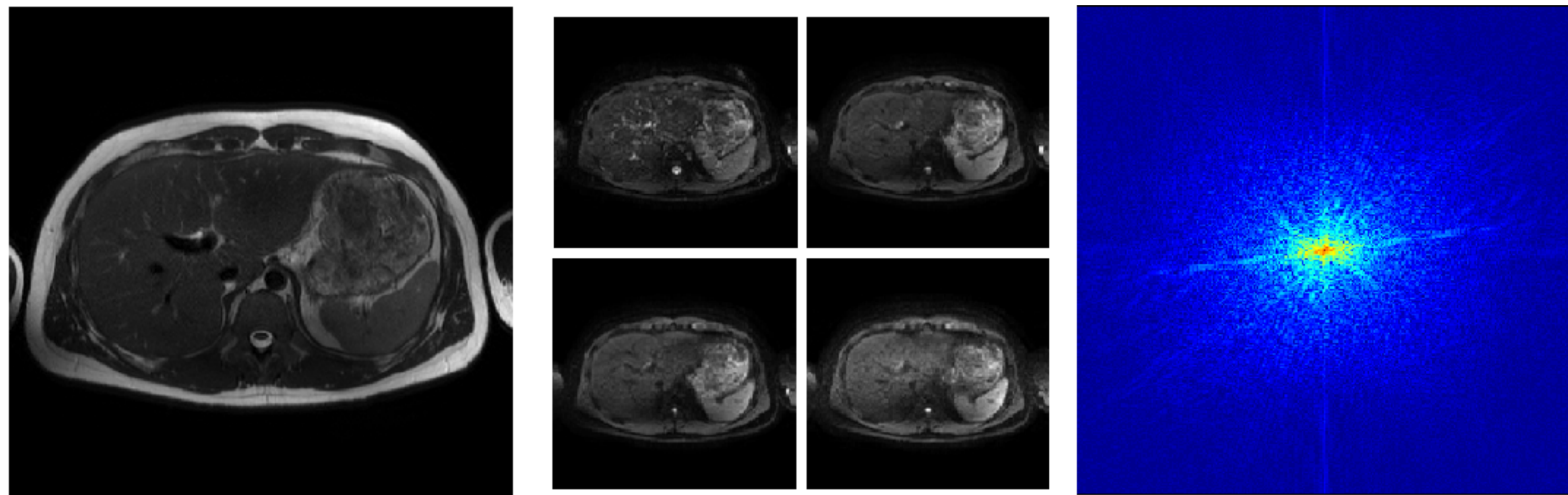


Figure 1: T2 Weighted MRI liver acquisition example (left). Diffusion Weighted Imaging acquisition examples with different b-values: 0, 200, 400 and 600 s/mm² (center). Fully sampled k-space image (right).

COMPRESSED SENSING

Compressed Sensing theory (CS) [2, 3] states that, when a signal has a *sparse* representation in a certain domain, it can be recovered from a significantly smaller set of measurements than indicated by the Nyquist theorem.

In dynamic MRI, most of the changes due to the motion of the structures lead to abrupt intensity changes, consequently, reducing the sparsity of the signal in the transformed domain. We can use some knowledge about the motion to restore this sparsity [4].

We can introduce, respectively, the estimated respiratory and cardiac motion information in the CS reconstruction by modifying the reconstruction problem.

Initially, a multi-slice/multi-contrast reconstruction is performed with respiratory binning according to the b-value and respiratory phase.

The image \mathbf{m} can be recovered from a small set of measurements \mathbf{y} by solving the following optimization problem:

$$\text{minimize}_{\mathbf{m}} \frac{1}{2} \sum_{b=1}^B \|\mathbf{y}_b - \mathbf{E}\mathbf{m}_b\|_{\ell_2}^2 + \lambda \|\nabla\mathbf{m}_b\|_{\ell_{2,1}}$$

where $\nabla\mathbf{m}$ is the regularization term and \mathbf{E} is the encoding operator that comprises: 2D FT, coil sensitivities and undersampling.

Once reconstructed these images, the respiratory motion estimation is introduced by means of groupwise registration method over every acquired b-value.

Multi-slice and multi-contrast reconstruction with respiratory motion compensation discriminating cardiac phases. Another binning will be performed over the acquired data, exploiting the inherent redundancy between b-values and cardiac phases.

$$\text{minimize}_{\mathbf{m}} \frac{1}{2} \sum_{b=1}^B \|\mathbf{y}_b - \mathbf{G}\mathbf{m}_b\|_{\ell_2}^2 + \lambda \|\nabla\mathbf{m}\|_{\ell_{2,1}}$$

where \mathbf{G} is the encoding operator that takes into account motion and undersampling effects simultaneously.

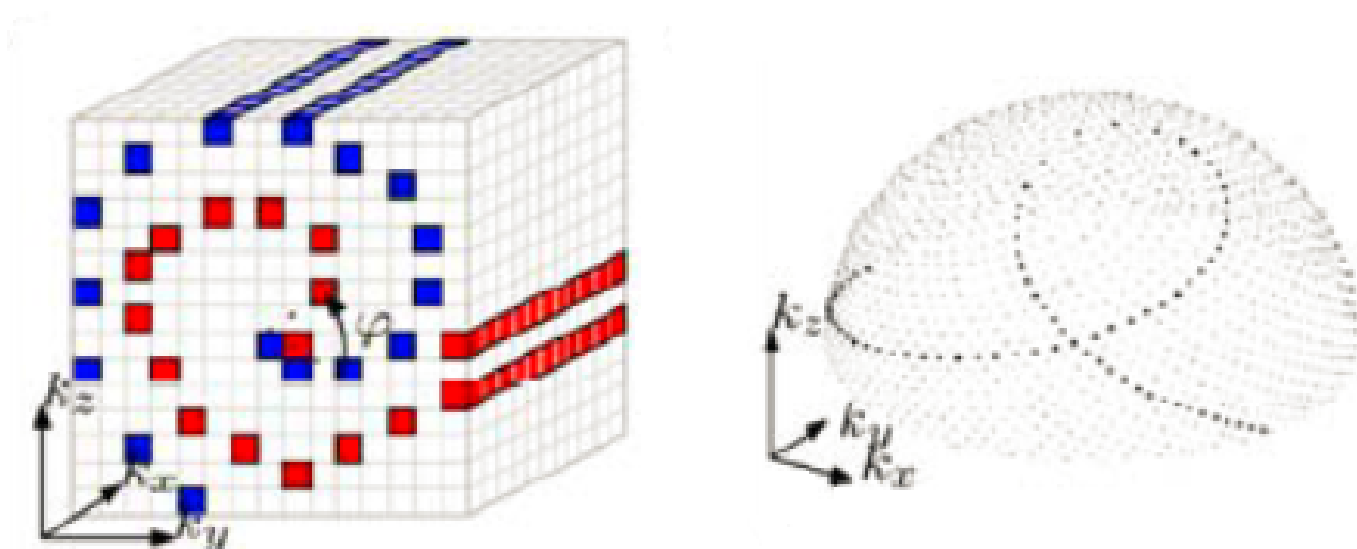


Figure 2: Proposed trajectories for the k-space subsampling for accelerated 3D reconstruction. Corresponding for cylindrical-spiral (left) and radial-spiral (right).

GROUPWISE REGISTRATION

Motion estimation robust against undersampling artifacts and flexible enough to describe both cardiac and respiratory motion.

Key components:

Non rigid deformation model: Free Form Deformations based on B-splines [6]:

$$\mathbf{T}(x, y) = (x, y) + \sum_{j,k} B_x(u_j(x))B_y(v_k(y))\theta_{j,k}$$

Groupwise registration metric [7]. Variance of intensities as sum of squared differences:

$$V(\mathbf{x}) = \frac{1}{N} \sum_{n=1}^N \left(m_n(T_n(\mathbf{x})) - \frac{1}{N} \sum_{k=1}^N m_k(T_k(\mathbf{x})) \right)^2$$

Spatio-temporal regularization:

$$C(T_\theta) = \frac{1}{|\chi|N} \sum_{n=1}^N \int_{\chi} \lambda_1 \left(\left| \frac{\partial T_n(\mathbf{x})}{\partial x} \right|^2 + \left| \frac{\partial T_n(\mathbf{x})}{\partial y} \right|^2 \right) + \lambda_2 \left(\left| \frac{\partial^2 T_n(\mathbf{x})}{\partial x^2} \right|^2 + \left| \frac{\partial^2 T_n(\mathbf{x})}{\partial y^2} \right|^2 \right) + \beta \left| \frac{\partial^2 T_n(\mathbf{x})}{\partial x \partial y} \right|^2 + \lambda_3 \left| \frac{\partial T_n(\mathbf{x})}{\partial n} \right|^2 + \lambda_4 \left| \frac{\partial^2 T_n(\mathbf{x})}{\partial n^2} \right|^2 dx$$

XCAT environment produces realistic phantoms for cardio-torso simulation. Besides, motion of different organs can be introduced, obtaining full isotropic synthetic 3D images [8].

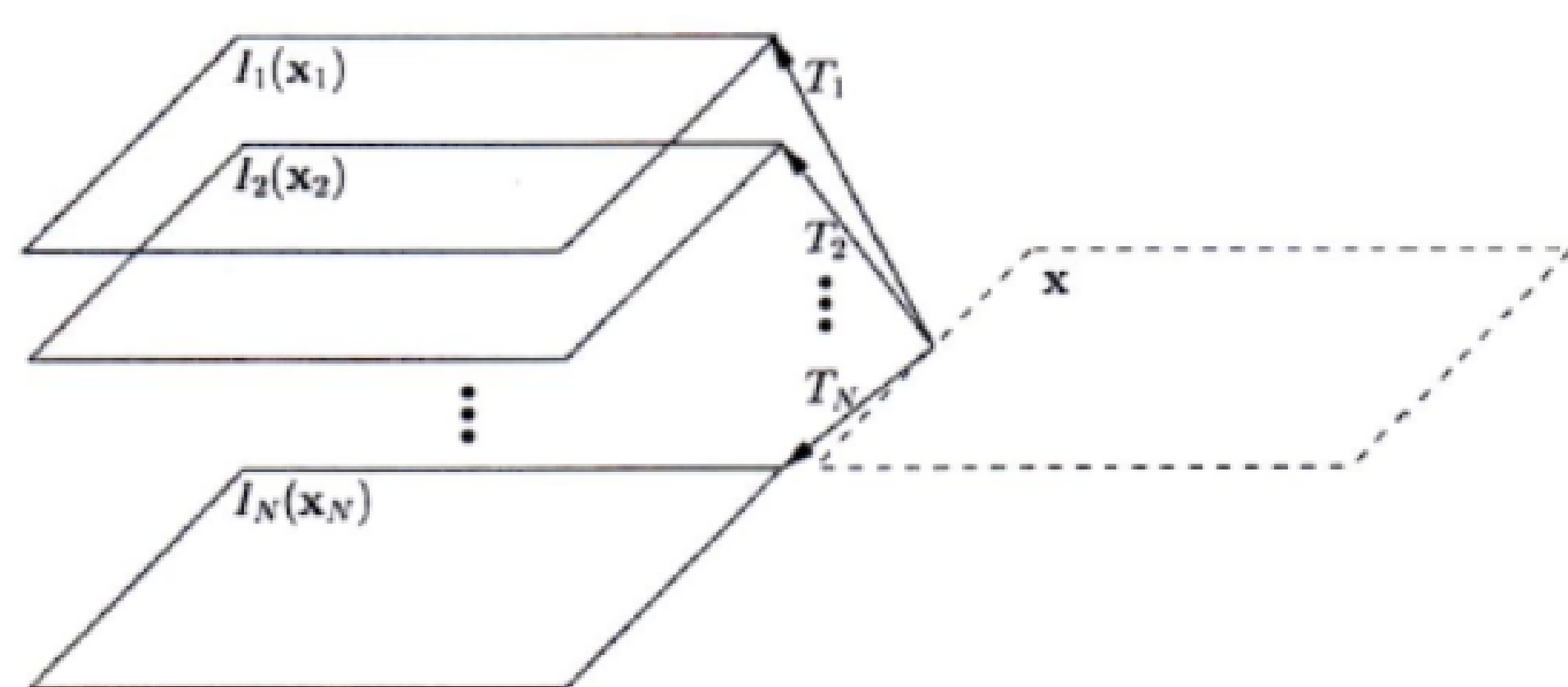


Figure 4: Graphic representation of groupwise registration.

TWO-STAGE RECONSTRUCTION

- Reconstruction problem: lack of the true dynamic image to estimate the motion information from, also affected by the motion artifacts and the ones introduced by the undersampling pattern.
- The main drawbacks for the acquisition are the motion related artifacts produced by respiratory and cardiac motion:
 - Local deformations are induced by the heartbeats, which originate a decayment of the diffusion signal, specially in the left lobe of the liver.
 - Respiratory motion introduces diffusion artifacts and blurring in the anatomical structures. Respiratory triggering is widely in many clinical studies, besides, for the left lobe, cardiac triggering is also advised. However, time scanning is significantly increased (up to 6 times) [5].
 - SMS (simultaneous multislice) is a novel technique based on multiband excitation, with such a design, multiple zones can be acquired simultaneously.

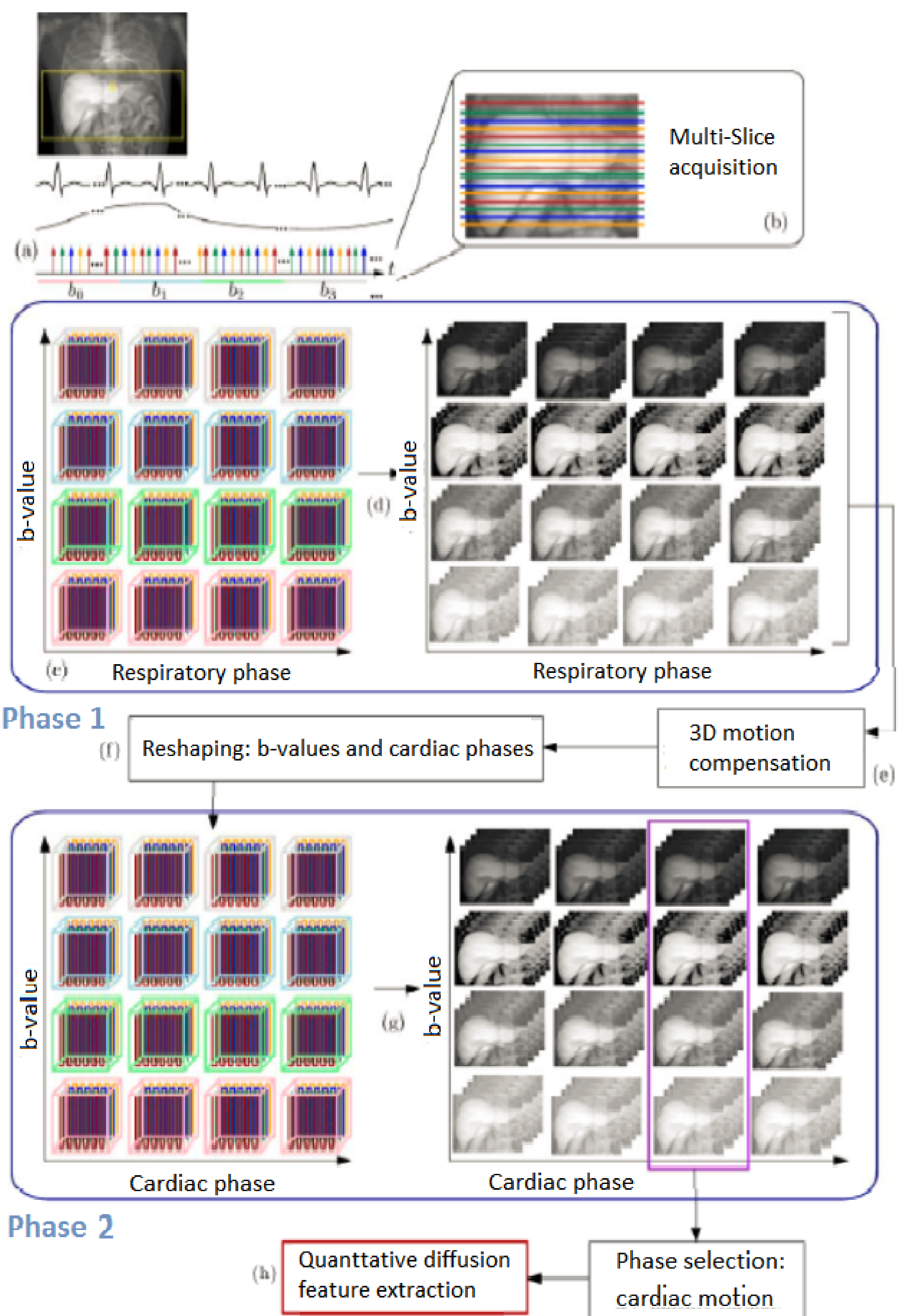


Figure 3: Diagram of the proposal for the multi-parameter reconstruction in abdominal diffusion.

REFERENCES

- A Luna, R Ribes, and JA Soto. *Diffusion MRI Outside the Brain: A Case-Based Review and Clinical Applications*. Springer Verlag, 2012.
- DL Donoho. Compressed sensing. *IEEE Trans. Inf. Theory*, 52(4):1289–1306, 2006.
- E.J. Candes and M.B. Wakin. An Introduction To Compressive Sampling. *IEEE Signal Processing Magazine*, 25(2), 2008.
- C Prieto, M Guarini, J Hajnal, and P Irarrazaval. Motion estimation applied to reconstruct undersampled dynamic MRI. *Advances in Image and Video Processing*, 4872:522–532, 2007.
- Y Takayama et al. Optimization and Clinical Feasibility of Free-breathing Diffusion Weighted Imaging of the Liver: Comparison with Respiratory-Triggered Diffusionweighted Imaging. *Magn. Reson. Med. Sci.*, 14(2):123–132, 2015.
- D Rueckert, LI Sonoda, C Hayes, DLG Hill, MO Leach, and DJ Hawkes. Nonrigid registration using free-form deformations: application to breast MR images. *IEEE Trans. Med. Imag.*, 18(8):712–721, 1999.
- L Cordero-Grande, S Merino-Caviedes, S Aja-Fernández, and C Alberola-López. Groupwise elastic registration by a new sparsity-promoting metric: application to the alignment of cardiac magnetic resonance perfusion images. *IEEE Trans. Pattern Anal. Mach. Intell.*, 35(11):2638–2650, 2013.
- L Wissmann, C Santelli, WP Segars, and S Kozierke. Realistic numerical phantoms for cardiovascular magnetic resonance. *Journal of cardiovascular magnetic resonance*, 16(1):63, 2014.